

Gastrointestinal and Hepatopancreatobiliary Diseases Tertiary Level care center



ADESH

GASTRO-LIVER CARE



**ADESH INSTITUTE OF
MEDICAL SCIENCES & RESEARCH**

NH-7, Barnala Road, Bathinda



॥ आदेषु तिस्रे आदेषु ॥

ADESH GASTRO-LIVER CARE

Adesh Medical College Hospital is a 750 bedded multispecialty hospital situated on Barnala road Bathinda. The aim of Adesh group is to provide advanced health care at the lowest cost to the patients of Malwa region. The Adesh gastro-liver care unit (GLCU) is situated, at the ground floor of super specialty block (SSB). The unit has team of super specialists doctors, like surgical gastroenterologist, medical gastroenterologist, intervention cardiologist, intensive care unit specialists, psychologist and consultant nutritionist. The Adesh GLCU is equipped with latest equipments and specially trained staff for advanced patient care.

Services provided at the Adesh Gastro-Liver care:

- Evaluation and management of all abdominal pains (acute and chronic abdomen)
- Evaluation and management of upper and lower GI bleed
- Evaluation and management of jaundice (Surgical/hepatocellular)
- Management of Liver failure
- Management of abdominal trauma
- Management of all abdominal malignancies
- Bariatric and Metabolic Surgery
- Diet and nutrition advise
- Trained stoma care specialist services available

Facilities available:

Latest ultra HD fujinon upper GI/ lower GI and side viewing scope

Diagnostics

- Upper and lower GI endoscopies
- Endoscopic retrograde cholangiopancreatography (ERC) Therapeutic
- Endoscopic variceal band ligation (EVL)/ sclerotherapy
- Endoscopic balloon dilation
- Endoscopic Biopsies
- ERC and common bile duct (CBD) stone retrieval
- ERC and pancreatic duct (PD) stenting



Ultra HD Endoscopes

DEPARTMENT OF SURGICAL GASTROENTEROLOGY

Facilities Available

- Karl storz Spies ultra HD camera unit
- Karl storz (Germany) laparoscopic and bariatric instruments
- Harmonic (Ethicon)
- CUSA (Cavitron Ultrasonic Surgical Aspirator)

ALL ADVANCED OPEN AND ADVANCED LAPAROSCOPIC SURGERIES

BASIC - Laparoscopic (lap.) Cholecystectomy/Appendectomy

ADVANCED

- Lap. CBD exploration
- Lap. splenectomy
- Lap. right and left hemicolectomies
- Lap. Low and ultra low anterior resection (LAR)
- Lap. abdominoperineal resection (APR)
- Lap. Peptic/hollow organ Perforation repair
- Lap. TVGJ/Lap. GJ
- Lap. hydatid cyst deroofing
- Lap. Fundoplication
- Lap. Heller cardiomyotomy
- Video assisted retroperitoneal debridement (VARD)



STORZ
KARL STORZ - ENDOSCOPE



Harmonic- Advanced energy source

Bariatric & Metabolic Surgery

Laparoscopic Sleeve gastrectomy (LSG)/roux en Y Gastric Bypass (RYGB)

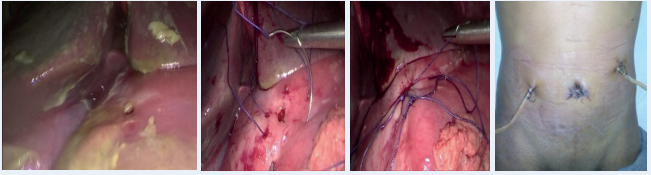
All Advanced Abdominal Surgeries

- Esophagectomy (thoracoscopic two field)
- Subtotal and total D2 Japanese gastrectomy
- Pancreatoduodenectomy (whipple's procedure)
- Distal pancreatectomy
- Spleen preserving pancreatic resection
- Radical antegrade modular pancreatectomy (RAMPS)
- Liver resection (Hepatectomy)
- Radical cholecystectomy
- Roux en Y hepaticojejunostomy (RYHJ)
- Pancreatic necrosectomy
- Coloplasty
- All types of intestinal surgeries

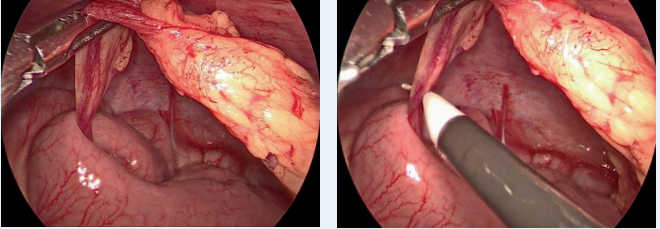


Advanced GI staplers for Anastomosis

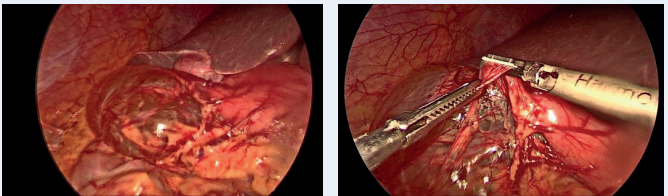
Lap. Peptic perforation repair



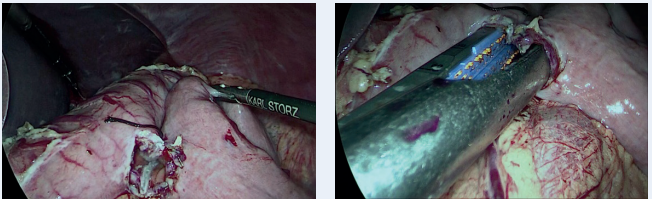
Acute Intestinal obstruction



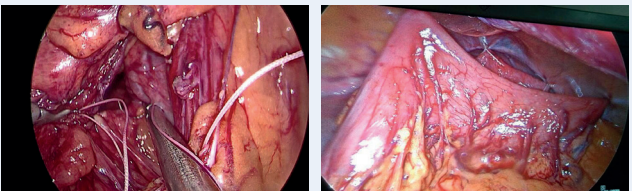
Lap. Omental cyst excision



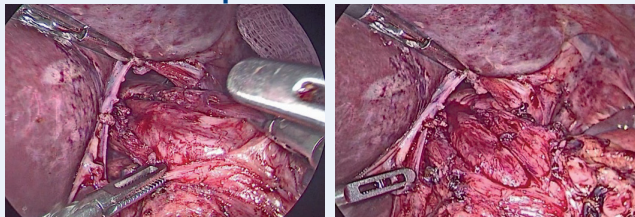
Lap. TVGJ



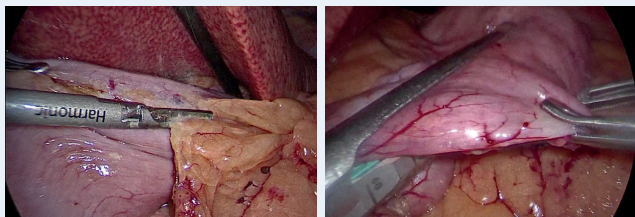
Lap. Gastric volvulus surgery



Lap. Heller cardiomyotomy and Dor's fundoplication- achalasia cardia



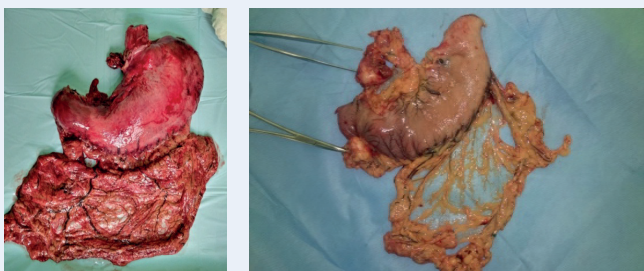
Lap. Sleeve gastrectomy (LSG)



Bleeding Duodenal ulcers



Total and subtotal Gastrectomy



Thoracoscopic Esophagectomy



Choledochal cyst excision- RYHJ



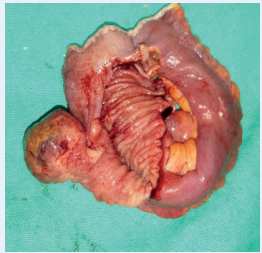
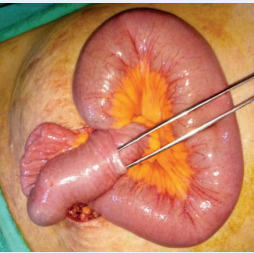
Ulcerative colitis (TPC/IPAA)



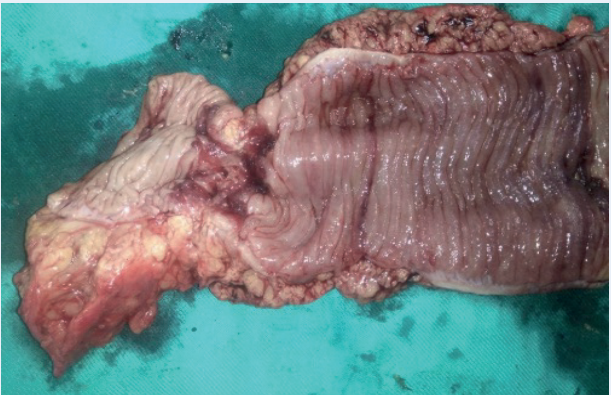
Acute pancreatitis (VARD)



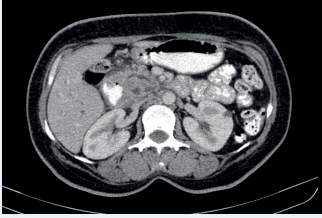
Small bowel tumors



Large bowel tumors



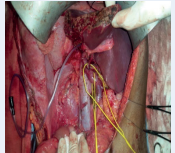
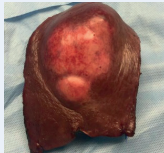
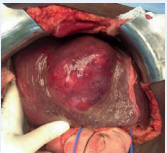
Whipple's Procedure



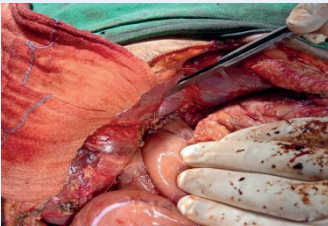
Carcinoma Gall bladder



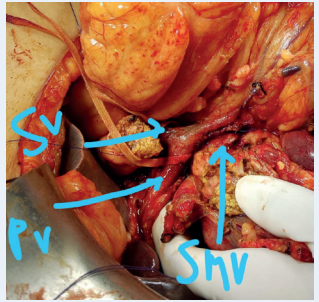
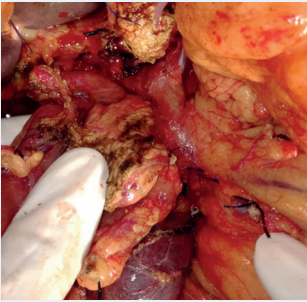
Liver resection (Hepatectomy)



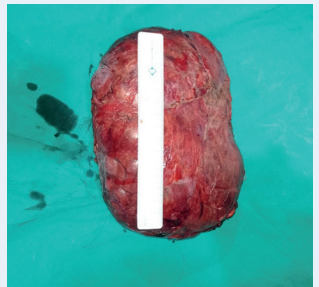
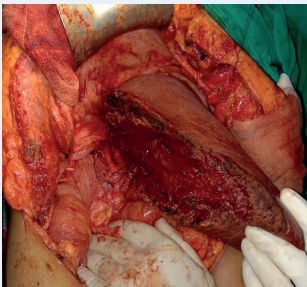
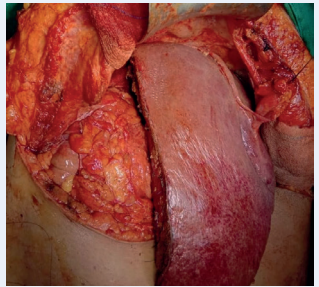
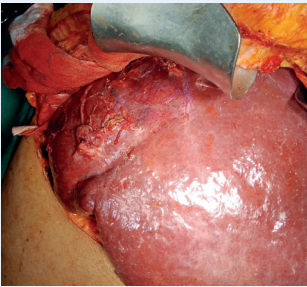
Complication managed



Whipple's Procedure with vascular Resection



Right Hepatectomy for HCC





Dr. Gajendra Bhati

MCh. Gastrointestinal and Hepatopancreatobiliary Surgery

Assistant Professor-AIMSR

M.B.B.S. - Government Medical College (GMC), Aurangabad, Maharashtra

M.S. - Gen. Surgery - Sardar Patel Medical college (SPMC) Bikaner, Rajasthan

FMAS - (Fellow in Minimal Access Surgery) Coimbatore, Tamilnadu

M.Ch. - GastroIntestinal and Hepatopancreatobiliary Surgery

(Jawaharlal Institute of Post Graduate Medical Education and Research
(JIPMER), Pondicherry)

Surgical experience- 12 years

Reach Us

Superspeciality Block. Room no. 6
Adesh Institute of Medical Science & Research
NH-7, Barnala Road Bathinda
99055-00000, 98820-98820

Route Map

