

**Gastrointestinal and Hepatopancreatobiliary  
Diseases Tertiary Level care center**



**ADESH**  
GASTRO-LIVER CARE

**Adesh Institute of Medical Science & Research**

NH-7, Barnala Road Bathinda  
0164-5055015, 5055100

## Adesh Gastro-Liver Care

Adesh Medical College Hospital is a 750 bedded multispecialty hospital situated on Barnala road Bathinda. The aim of Adesh group is to provide advanced health care at the lowest cost to the patients of Malwa region. The Adesh gastro-liver care unit (GLCU) is situated, at the ground floor of super specialty block (SSB). The unit has team of super specialists doctors, like surgical gastroenterologist, medical gastroenterologist, intervention cardiologist, intensive care unit specialists, psychologist and consultant nutritionist. All consultancies provided here at Adesh is free of cost (no OPD charges), so the poorer from society can have access to the super specialists. The Adesh GLCU is equipped with latest equipments and specially trained staff for advanced patient care.

### Services provided at the Adesh Gastro-Liver care:

- Evaluation and management of all abdominal pains (acute and chronic abdomen)
- Evaluation and management of upper and lower GI bleed
- Evaluation and management of jaundice (Surgical/ hepatocellular)
- Management of Liver failure
- Management of abdominal trauma
- Management of all abdominal malignancies
- Bariatric and Metabolic surgery
- Diet and nutrition advise
- Trained stoma care specialist services available

### Facilities available:

Latest ultra HD Fujinon upper GI/ lower GI and side viewing scope

#### Diagnostics

- Upper and lower GI endoscopies
- Endoscopic retrograde cholangiopancreatography (ERC)

#### Therapeutic

- Endoscopic variceal band ligation (EVL)/ sclerotherapy
- Endoscopic balloon dilation
- Endoscopic Biopsies
- ERC and common bile duct (CBD) stone retrieval
- ERC and pancreatic duct (PD) stenting



### ULTRA HD ENDOSCOPES

## Department of Surgical Gastroenterology

### FACILITIES AVAILABLE

- Karl storz Spies ultra HD camera unit
- Karl storz (Germany) laparoscopic and bariatric instruments
- Harmonic (Ethicon)
- CUSA (Cavitron Ultrasonic Surgical Aspirator)

### ALL ADVANCED OPEN AND ADVANCED LAPAROSCOPIC SURGERIES

- **BASIC**- Laparoscopic (lap.) Cholecystectomy/Appendectomy
- **ADVANCED**

- Lap. CBD exploration
- Lap. splenectomy
- Lap. right and left hemicolectomies
- Lap. Low and ultra low anterior resection (LAR)
- Lap. abdominoperineal resection (APR)
- Lap. Peptic/hollow organ Perforation repair
- Lap. TVGJ/Lap. GJ
- Lap. hydatid cyst deroofing
- Lap. Fundoplication
- Lap. Heller cardiomyotomy
- Video assisted retroperitoneal debridement (VARD)







**HARMONIC- ADVANCED ENERGY SOURCE**

**BARIATRIC & METABOLIC SURGERY-** Laparoscopic Sleeve gastrectomy (LSG)/roux en Y gastric bypass (RYGB)

## All advanced Abdominal Surgeries

- Esophagectomy (thoracoscopic two field)
- Subtotal and total D2 Japanese gastrectomy
- Pancreatoduodenectomy (whipple's procedure)
- Distal pancreatectomy
- Spleen preserving pancreatic resection
- Radical antegrade modular pancreatosplenectomy (RAMPS)
- Liver resection (Hepatectomy)
- Radical cholecystectomy
- Roux en Y hepaticojejunostomy (RYHJ)
- Pancreatic necrosectomy
- Coloplasty
- All types of intestinal surgeries

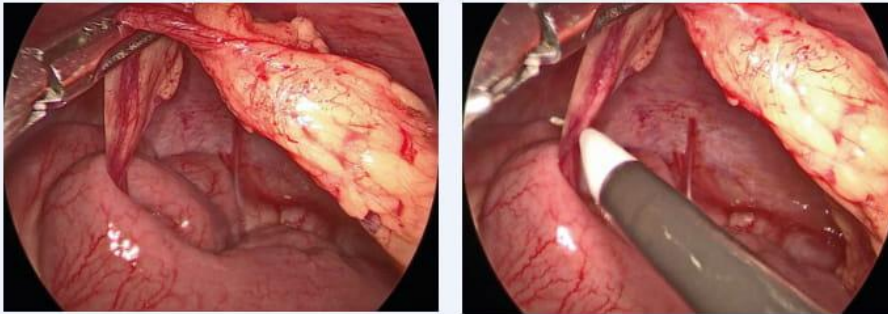


**ADVANCED GI STAPLERS FOR ANASTOMOSIS**

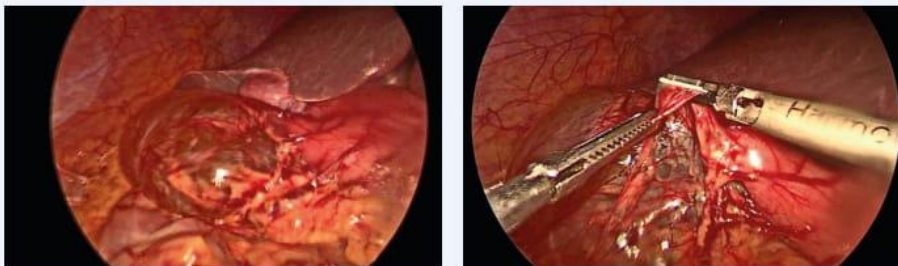
## Lap. Peptic perforation repair



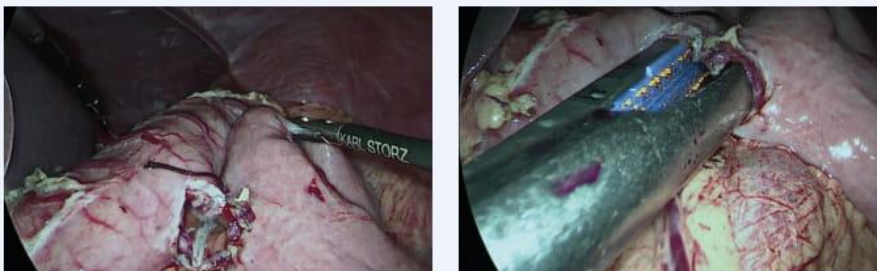
## Acute Intestinal obstruction



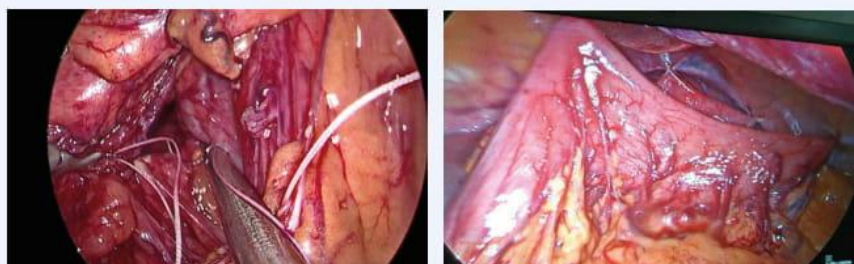
## Lap. Omental cyst excision



## Lap. TVGJ

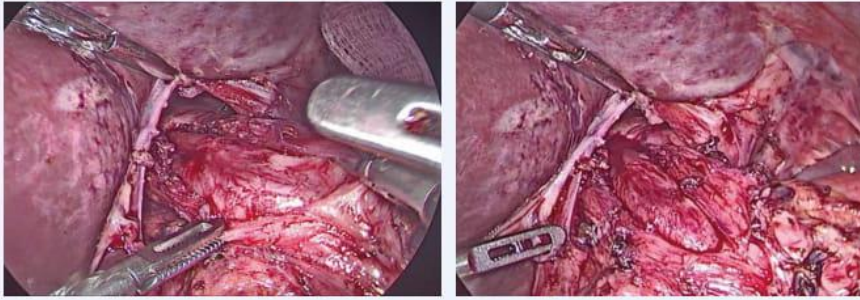


## Lap. Gastric volvulus surgery

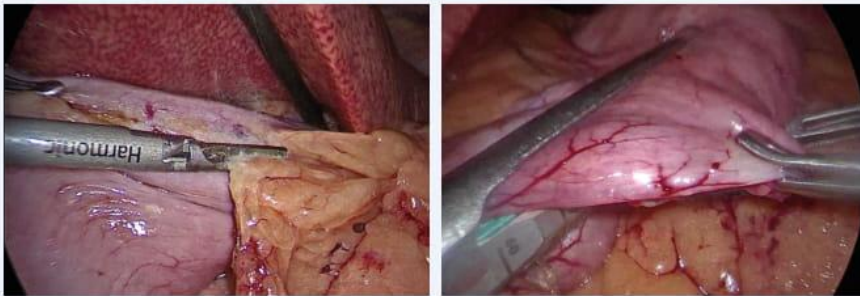




## Lap. Heller cardiomyotomy and Dor's fundoplication- achalasia cardia



## Lap. Sleeve gastrectomy (LSG)



## Bleeding Duodenal ulcers



## Total and subtotal Gastrectomy



## Thoracoscopic Esophagectomy



## Choledochal cyst excision- RYHJ



## Ulcerative colitis (TPC/IPAA)



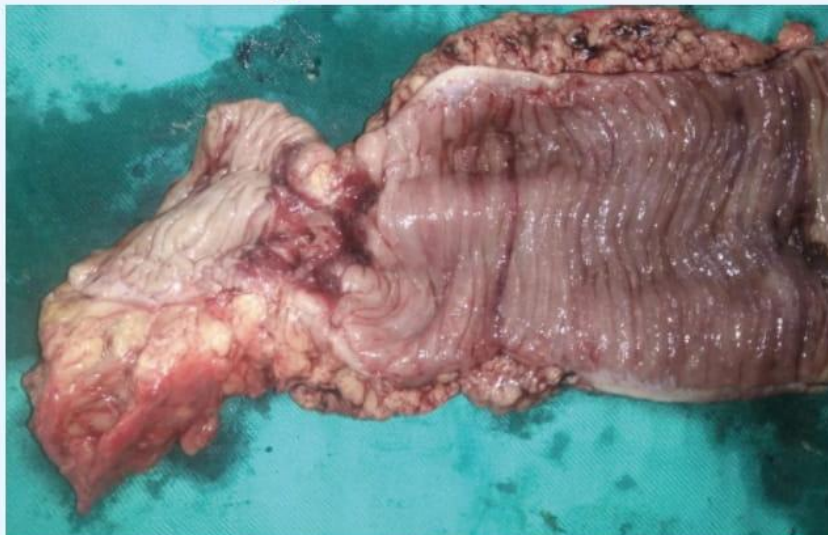
## Acute pancreatitis (VARD)



## Small bowel tumors



## Large bowel tumors





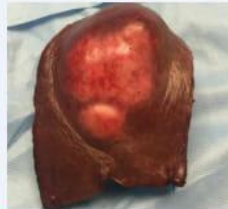
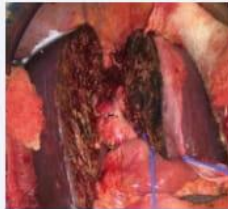
## Whipple's Procedure



## Carcinoma Gall bladder



## Liver resection (hepatectomy)



## Complication managed







## Dr. Gajendra Bhati

### MCh. Gastrointestinal and Hepatopancreatobiliary Surgery

Assistant Professor-AIMSR

M.B.B.S. – Government medical College (GMC), Aurangabad, Maharashtra

M.S. – Gen. Surgery – Sardar Patel Medical college (SPMC) Bikaner, Rajasthan

FMAS - (Fellow in Minimal access surgery) coimbatore, Tamilnadu

M.Ch. – GastroIntestinal and Hepatopancreatobiliary surgery

(Jawaharlal institute of post graduate medical education and research (JIPMER), Pondicherry)

**Surgical experience- 12 years**

## Reach Us

Superspeciality Block. Room no. 6

### Adesh Institute of Medical Science & Research

NH-7, Barnala Road Bathinda

75270-11560, 99505-78578, 95016-85856

## Route Map

